

Name: _____

7R

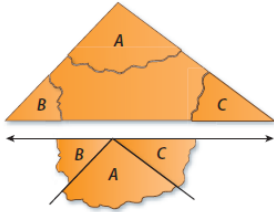
Date: _____

Classwork 10.4

Triangle Sum Theorem

Aim: How do we find the measure of a missing angle of a triangle?

There is a special relationship between the measures of the interior angles of a triangle.

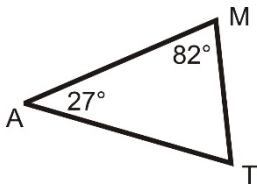


The **Triangle Sum Theorem** states that the sum of the interior angles of a triangle is _____.

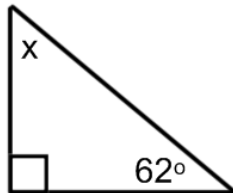
$$A + B + C = 180$$

Example 1: Find the measure of the missing angles. Solve *algebraically*.

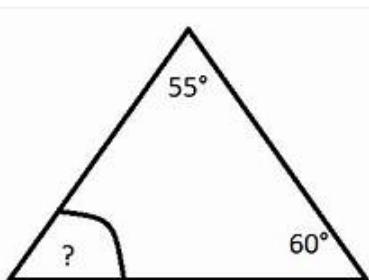
a)



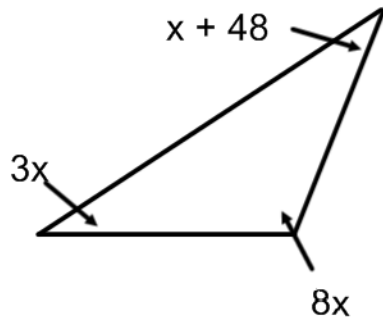
b)



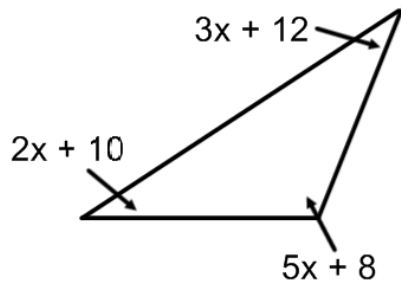
Try It: Find the measure of the missing angle. Solve *algebraically*.



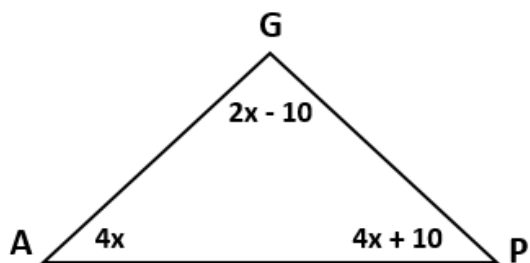
Example 2: Find the value of x . Solve algebraically.



Example 2: Find the value of the missing angles. Solve algebraically.



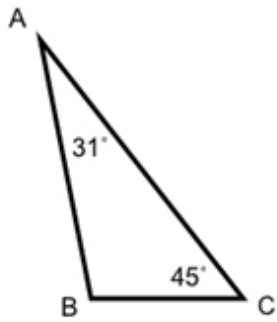
Try It: Find the value of x . Solve algebraically.



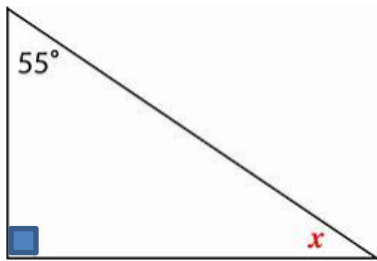
On your own!

(#1 - 2) Find the measure of the missing angles. Solve algebraically.

1)



2)



3) Find the value of the missing angles. Solve algebraically.

