

Name: _____

Date: _____

7R

Classwork 10.5

Unit 10 Review

1) Fill in the blanks with the correct type of angle (acute, right, obtuse, straight)

- a) A _____ angle is an angle that measures **exactly 90°** .
- b) An _____ angle is an angle that measures **less than 90°** .
- c) An _____ angle is an angle that measures **more than 90° but less than 180°** .
- d) A _____ angle is an angle that measures **exactly 180°** .

2) Which pair of angles is **supplementary**?

- | | | | |
|----------|----------------------------|----------|---------------------------|
| A | 27° and 163° | B | 75° and 85° |
| C | 76° and 104° | D | 84° and 6° |

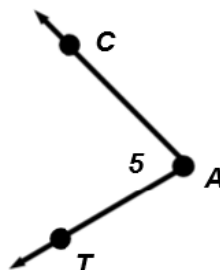
3) What is the **complement** of a 31° angle?

- | | | | | | | | |
|----------|------------|----------|------------|----------|------------|----------|-------------|
| A | 31° | B | 59° | C | 90° | D | 149° |
|----------|------------|----------|------------|----------|------------|----------|-------------|

4) If the measure of an angle is 76° , what is the measure of its **supplement**?

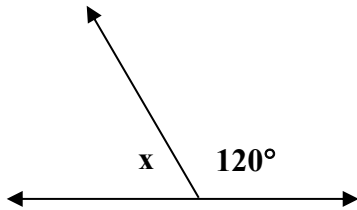
5) Which of the following is **not** a correct way to name the angle shown?

- A** $\angle CAT$
- B** $\angle TCA$
- C** $\angle A$
- D** $\angle 5$

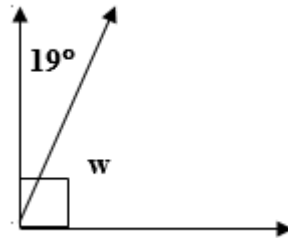


#6-7 Name the angle relationship and find the measure of the missing angle in each of the following.

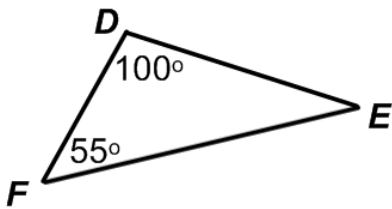
6)



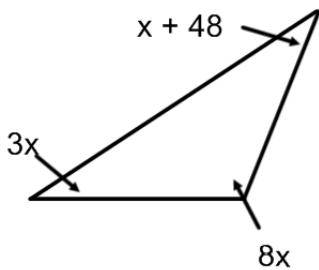
7)



8) Find the value of angle E in the triangle below.

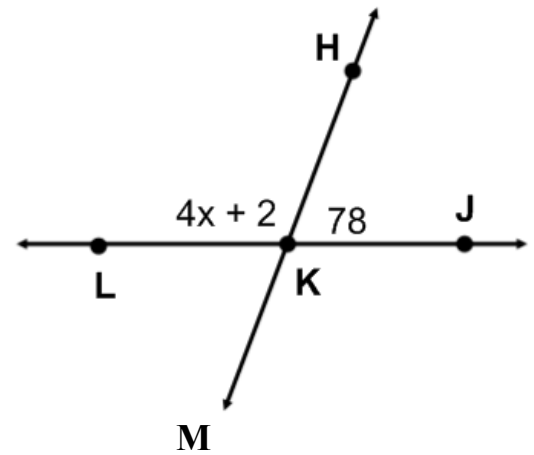


9) Find the value of x in the triangle below.



10) a. What is the angle relationship formed by $\angle HKL$ and $\angle HKJ$?

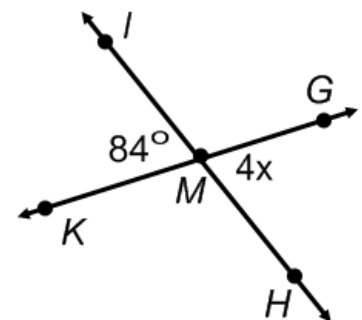
B. Find the value x.



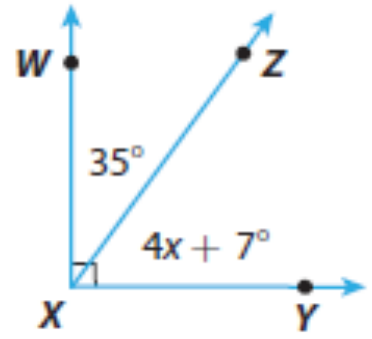
c. What is the measure of $\angle HKL$?

11) a. What is the angle relationship formed by $\angle GMH$ and $\angle IMK$?

b. Find the value of x.



12) a. What is the angle relationship shown below?



b. Find the value of x.

c. What is the measure of $\angle ZXY$?